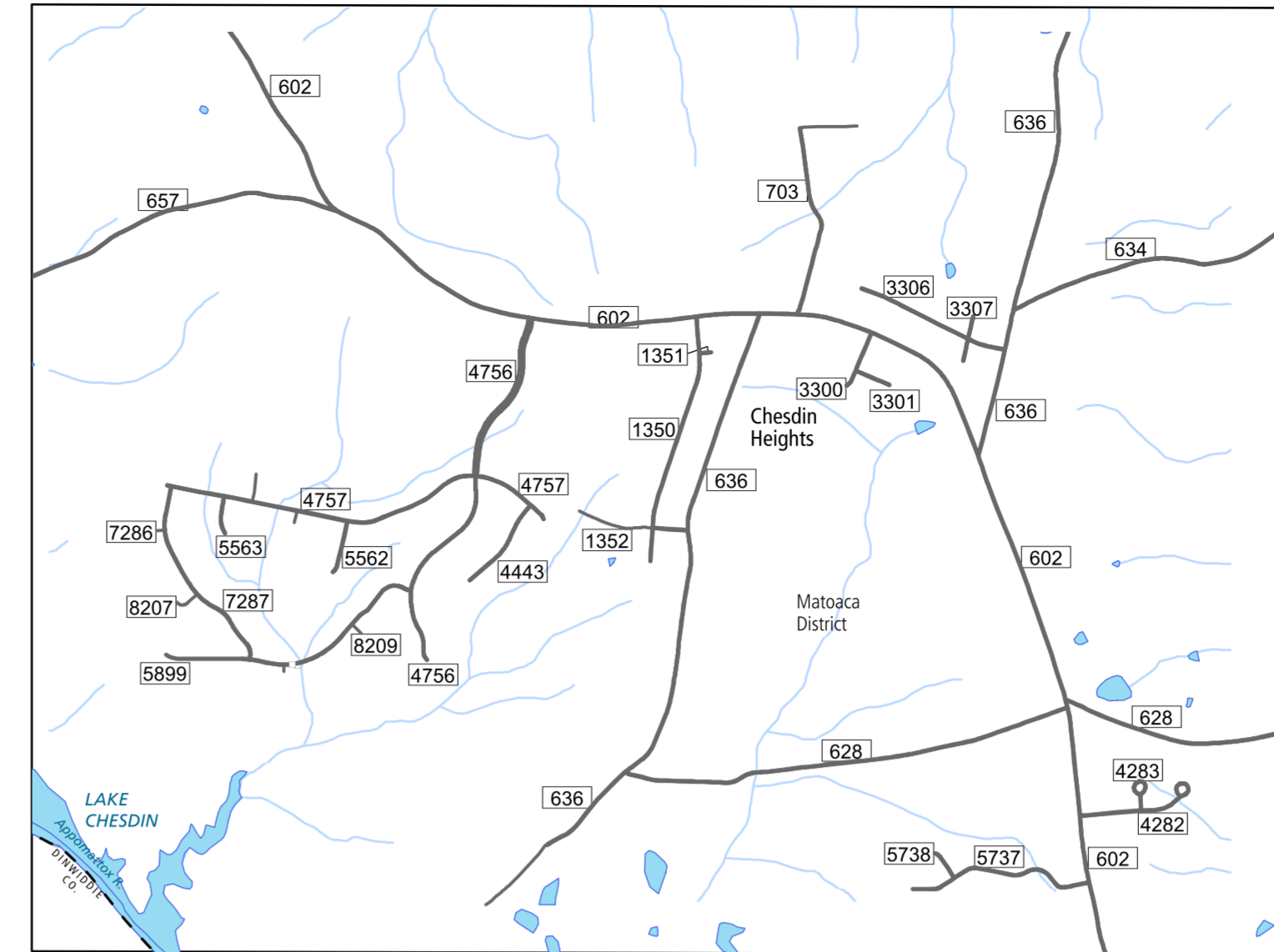
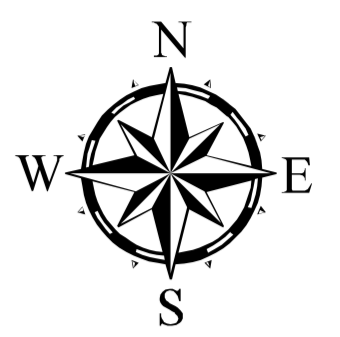


1
CHESDIN LANDING AREA
(six times map scale)

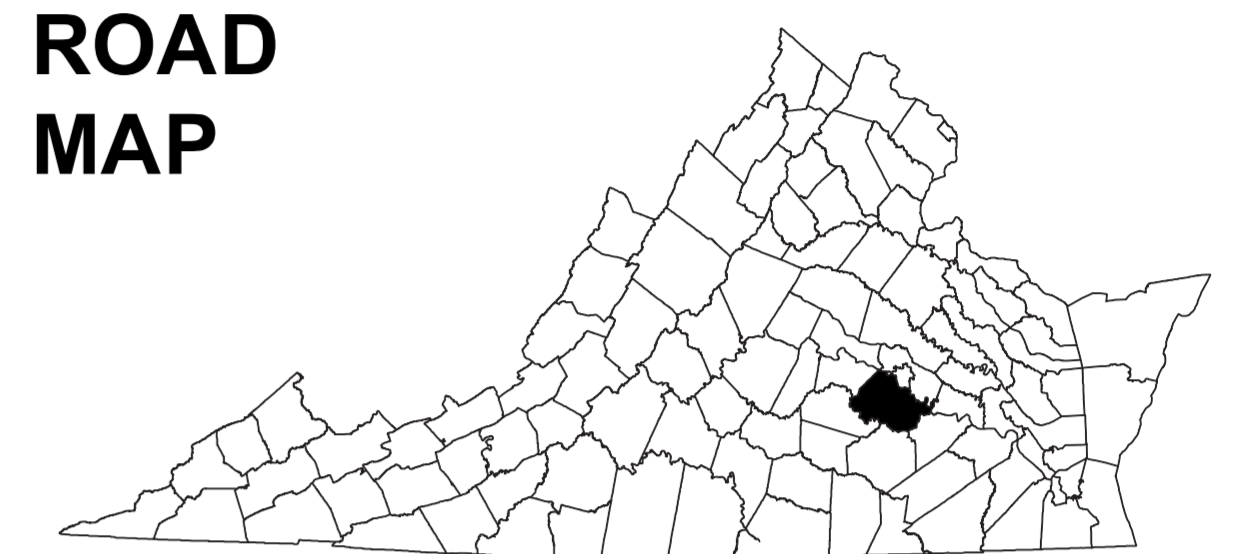


2
CHESDIN HEIGHTS AREA
(six times map scale)

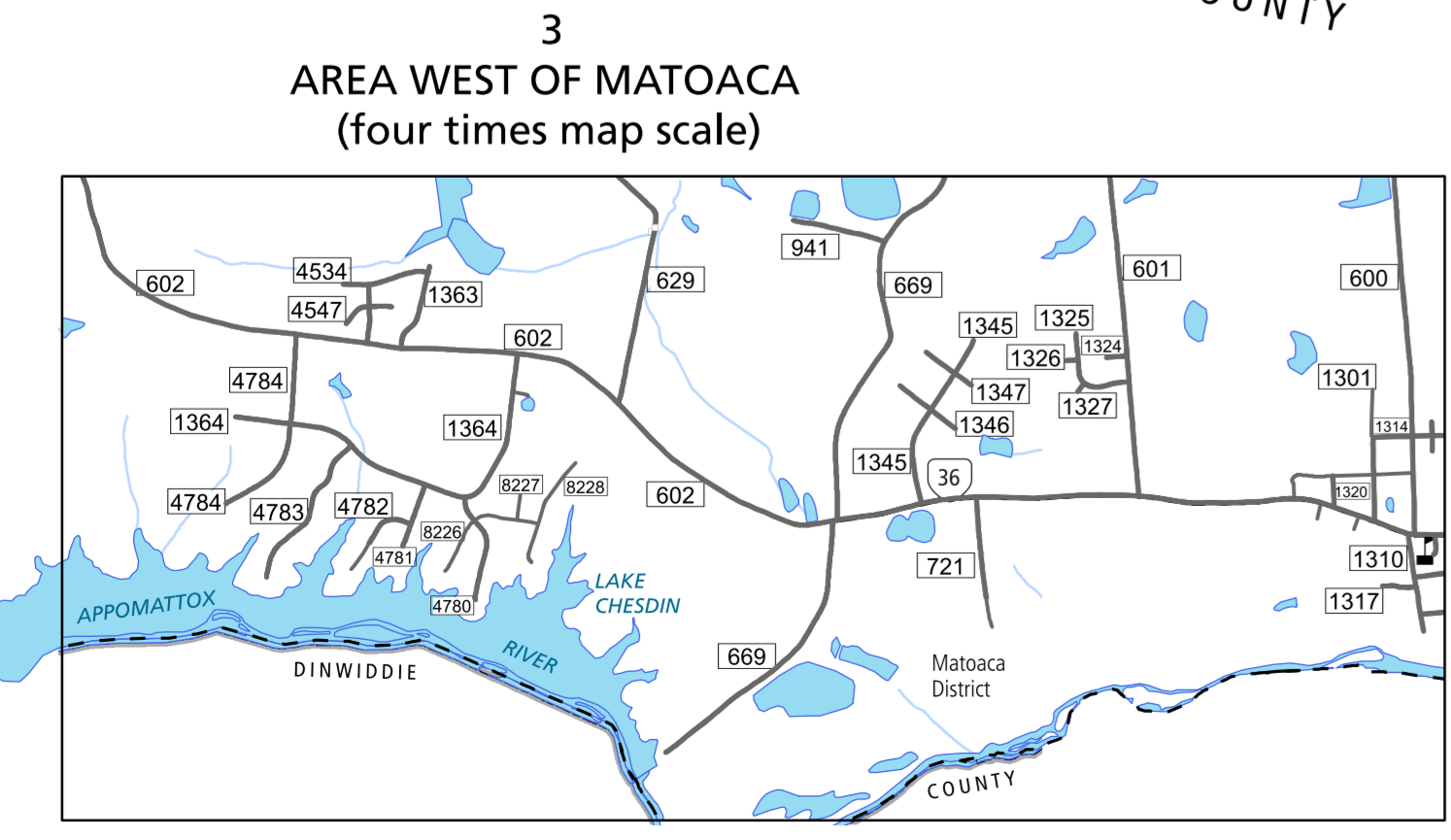
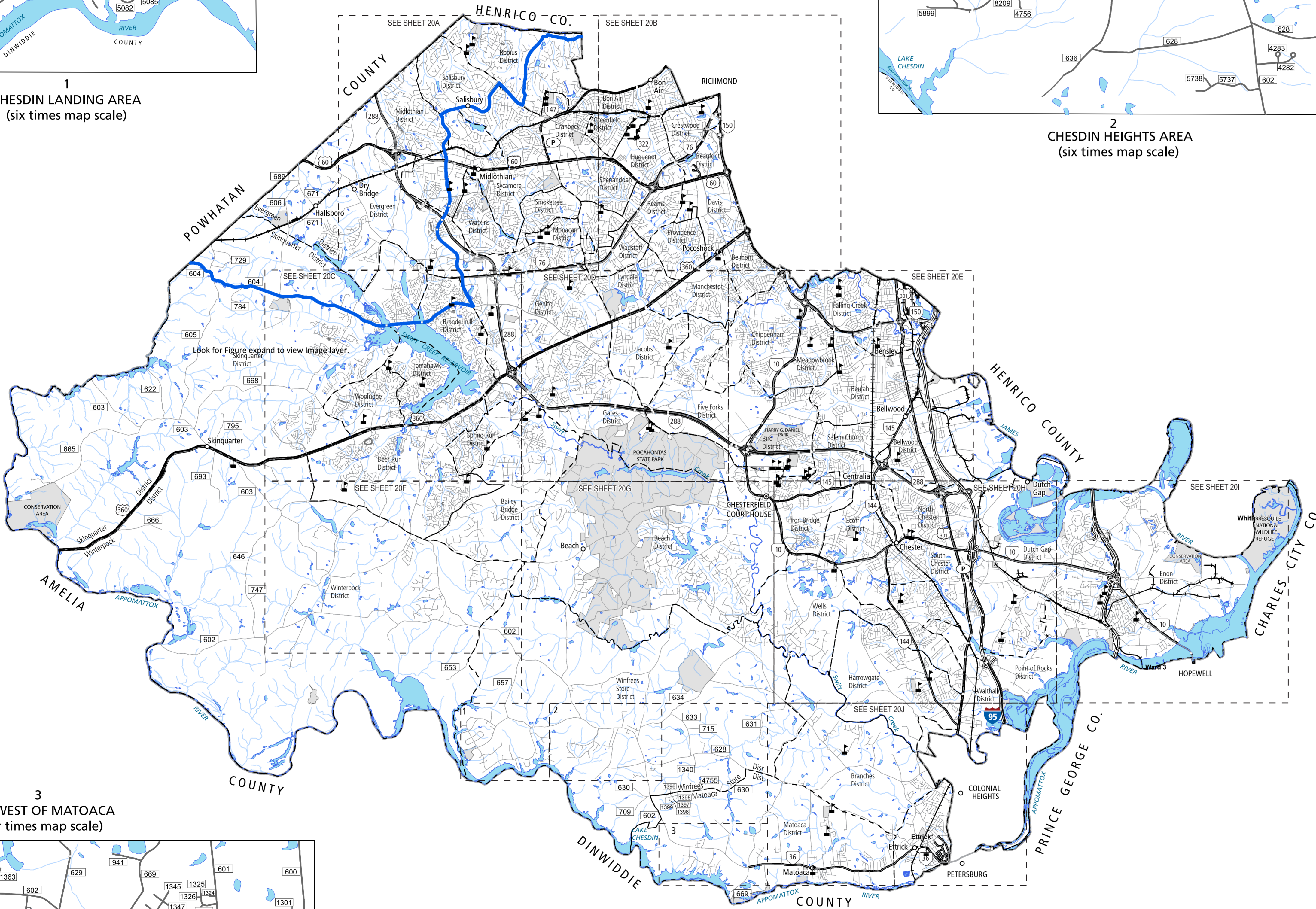
CHESTERFIELD COUNTY, VA



COUNTY
ROAD
MAP



CHESTERFIELD
COUNTY



3
AREA WEST OF MATOACA
(four times map scale)

ROAD CLASSIFICATIONS

- Frontage Road
- Secondary Route
- State Route
- U.S. Route
- Urban Road
- LightSurface
- DividedHwyInterstate
- AllWeatherSurface
- Unsurfaced
- otherSurface
- BikeRoutes
- AppalachianTrail
- Scenic Roads

MISCELLANEOUS

- Schools
- Seaports
- Park_RideLots

AIRPORTS

- Commercial
- General
- Military

RAILROADS

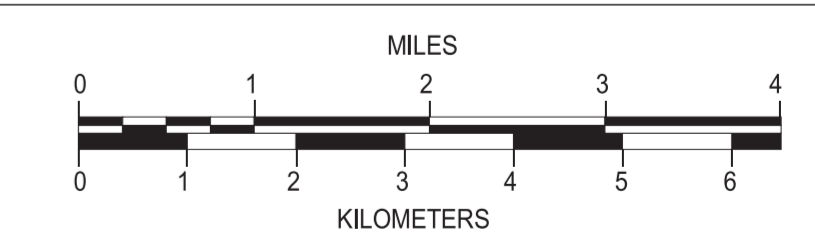
- Metro
- VARailroads
- Park_N_Ride

BOUNDARIES

- MilitaryAreas
- MagisterialDistricts
- Incorp_Areas
- Natural_LandCover

Additional ROAD CLASSIFICATION (Post 2019)

- Hard-surface



The accuracy or completeness of this map is not guaranteed or warranted.
Map depicts state-maintained highway network as of May 1, 2021.
Copyright © 2021 by Commonwealth of Virginia
Department of Transportation, All Rights Reserved

AN INVENTORY OF STATE MAINTAINED ROADS

TOTAL PRIMARY MILEAGE IN COUNTY 12/31/19: 138.52

SECONDARY MILEAGE TABULATION

TYPE	7/1/1932	7/1/1934	7/1/1941	TYPE	12/31/1950	12/31/1960	12/31/1970	12/31/1980	12/31/1990	12/31/2000	12/31/2015	12/31/2019
BIT_SUR_PAVED	137.23	247.37	298.19	HARD SURFACE	392.74	562.11	648.67	860.01	1,177.86	1,392.58	1,729.78	1,780.74
GRAVEL_SOIL.ETC.	338.90	212.11	167.46	ALL WEATHER SURFACE	74.18	95.04	25.96	14.59	11.68	11.68	3.36	0.00
GRADED & DRAINED	0.00	19.84	15.33	LIGHT SURFACE	71.10	48.96	28.02	16.31	9.65	8.84	2.63	0.00
UNIMPROVED	1.65	6.45	2.30	UNSURFACED	6.28	5.42	2.54	1.85	0.00	0.00	0.00	4.64
TOTAL MILEAGE	477.78	485.77	483.28	TOTAL MILEAGE	544.30	711.53	705.19	892.76	1,199.19	1,413.10	1,735.95	1,785.38