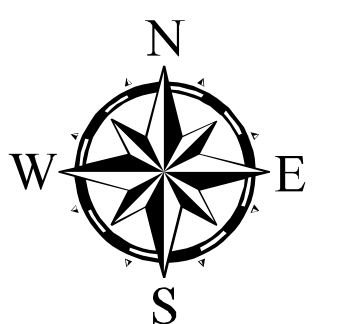
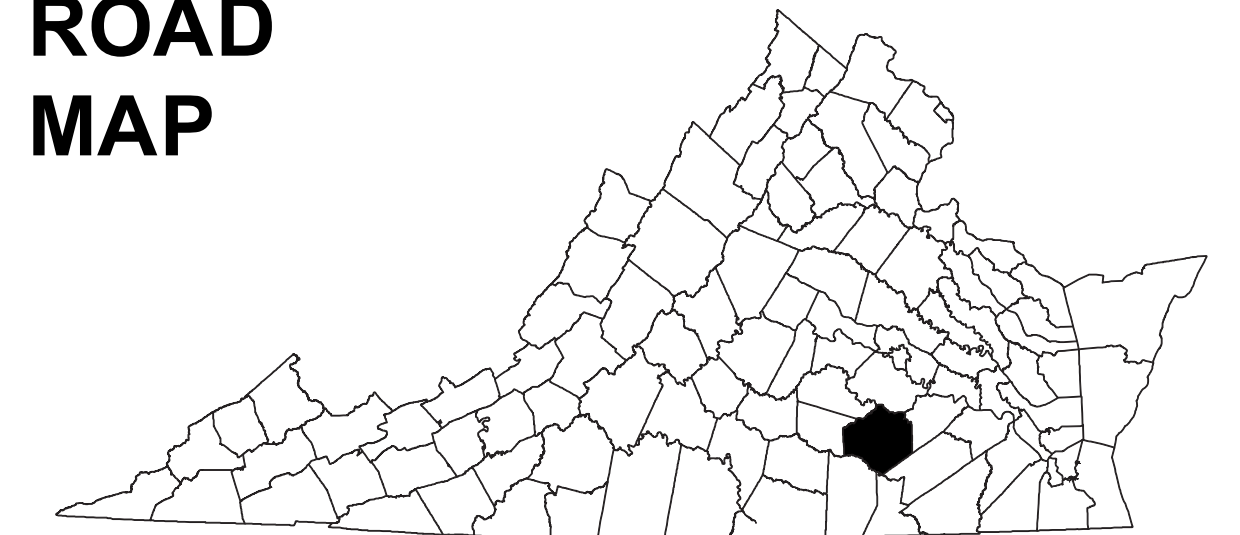


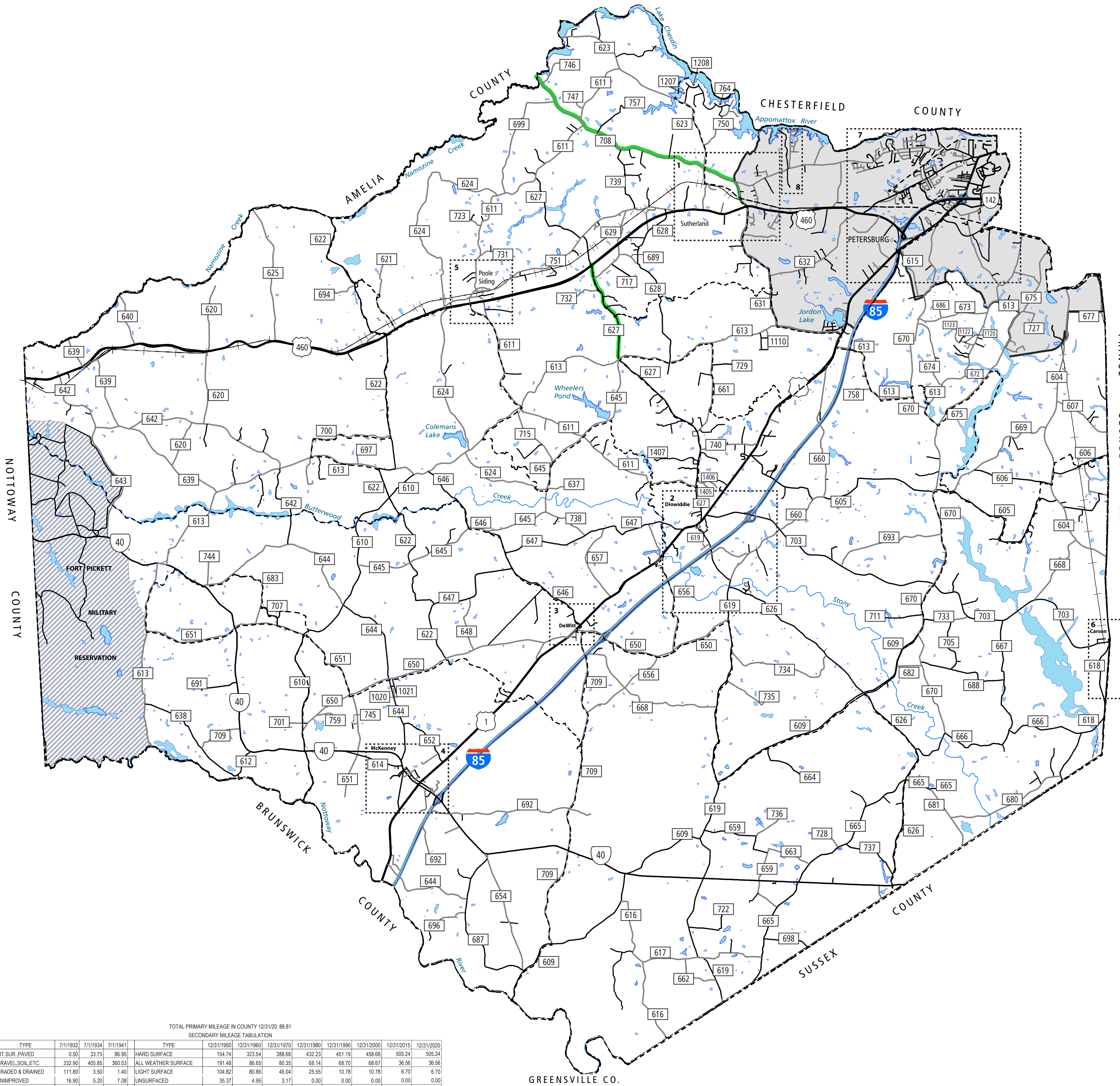
DINWIDDIE COUNTY, VA



COUNTY ROAD MAP



DINWIDDIE COUNTY



ROAD CLASSIFICATIONS

- Frontage Road
- Secondary Route
- State Route
- U.S. Route
- Urban Road
- LightSurface
- DividedHwyInterstate
- AllWeatherSurface
- Unsurfaced
- otherSurface
- BikeRoutes
- AppalachianTrail
- Scenic Roads

MISCELLANEOUS

- Schools
- Seaports
- Park_RideLots

AIRPORTS

- Commercial
- General
- Military

RAILROADS

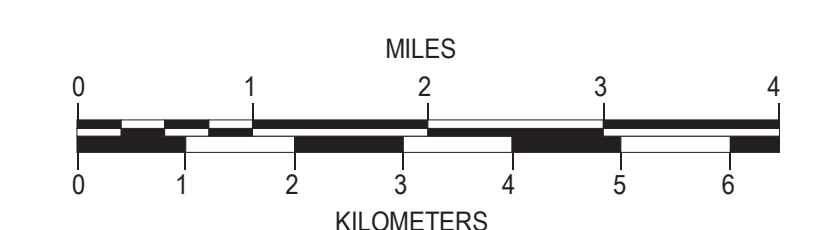
- Metro
- VARailroads
- Park_N_Ride

BOUNDARIES

- MilitaryAreas
- MagisterialDistricts
- Incorp_Areas
- Natural_LandCover

Additional ROAD CLASSIFICATION (Post 2019)

- Hard-surface



The accuracy or completeness of this map is not guaranteed or warranted. Map depicts state-maintained highway network as of May 1, 2021. Copyright © 2021 by Commonwealth of Virginia Department of Transportation, All Rights Reserved

AN INVENTORY OF STATE MAINTAINED ROADS

TOTAL PRIMARY MILEAGE IN COUNTY 12/31/20: 88.81
SECONDARY MILEAGE TABULATION

TYPE	7/1/1932	7/1/1934	7/1/1941	TYPE	12/31/1950	12/31/1960	12/31/1970	12/31/1980	12/31/1990	12/31/2000	12/31/2015	12/31/2020
BIT SUR. PAVED	0.50	33.75	86.95	HARD SURFACE	154.74	323.54	388.68	432.23	451.19	458.68	505.24	505.24
GRAVEL SOIL ETC.	332.90	405.85	360.53	ALL WEATHER SURFACE	191.48	86.65	80.35	68.14	68.70	68.67	36.56	36.56
GRADED & DRAINED	111.80	3.50	1.40	LIGHT SURFACE	104.82	80.86	46.04	25.55	10.78	10.78	6.70	6.70
UNIMPROVED	16.90	5.20	7.08	UNSURFACED	35.37	4.95	3.17	0.00	0.00	0.00	0.00	0.00
TOTAL MILEAGE	462.10	446.30	455.96	TOTAL MILEAGE	486.41	496.00	518.24	525.92	530.67	538.13	548.96	548.96